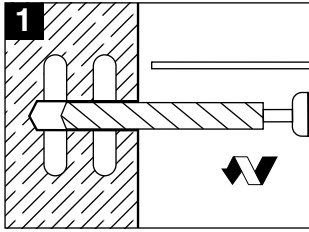
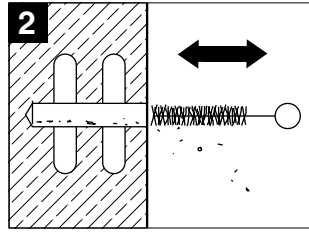


4.2.3.4 Installation Instructions

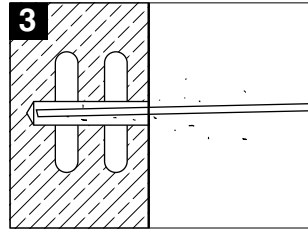
HIT-I Inserts and HIT-A Rods into Hollow Brick, Block or Tile



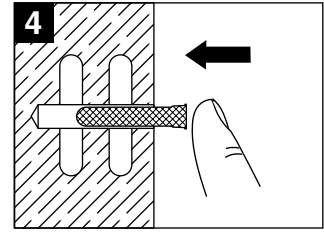
1. Select the proper bit. Set the depth gauge, drill the hole, rotation only. Hilti URM bits are recommended for drilling into masonry.



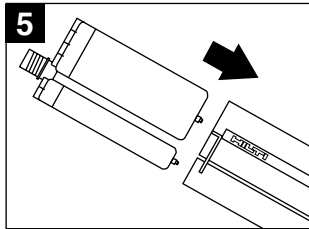
2. Proper hole cleaning is essential. Use a nylon brush to remove loose material. Do not use brushes with metal bristles.



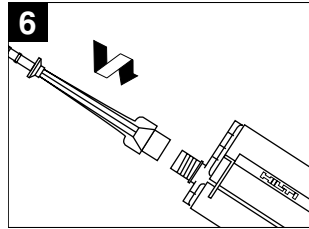
3. Use compressed air to blow out the hole from the bottom. The Hilti air nozzle is designed for hole cleaning.



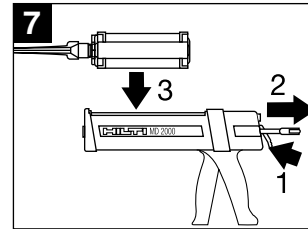
4. Insert specified HIT-S type screen tube into hole.



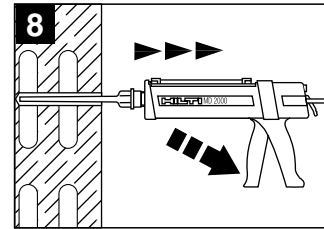
5. Insert refill pack into holder.



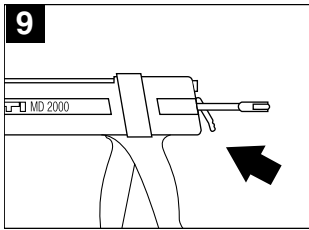
6. Screw on mixing nozzle with extension.



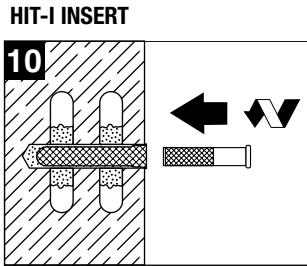
7. Put holder into dispenser and **DISCARD FIRST TWO TRIGGER-PULLS OF ADHESIVE** from each refill pack.



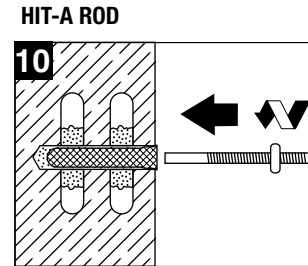
8. Fill HIT-S type screen tube completely from back to front edge of screen using the minimum number of trigger pulls listed in table.



9. Unlock dispenser

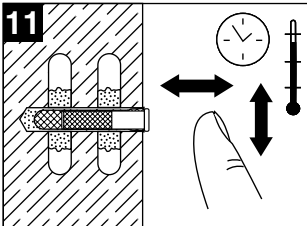


HIT-I INSERT

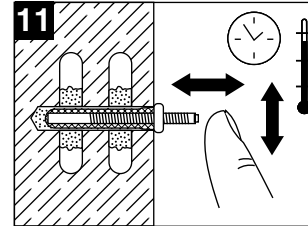


HIT-A ROD

10. Insert HIT-I Insert, or HIT-A Rod into adhesive-filled screen, twisting slightly.

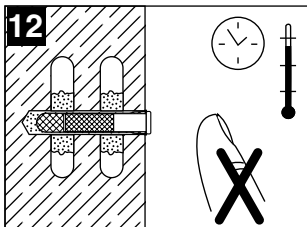


HIT-I INSERT

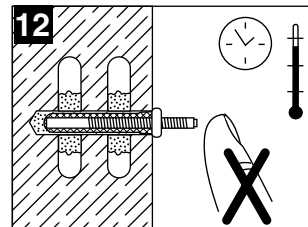


HIT-A ROD

11. Fastener may be adjusted during specified gel time.

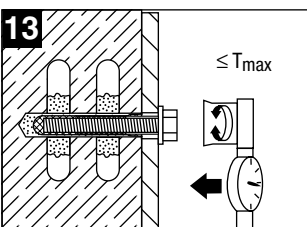


HIT-I INSERT

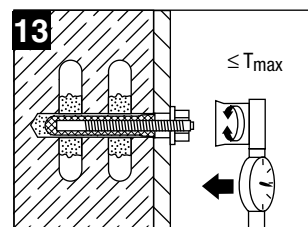


HIT-A ROD

12. Do not disturb fastener between specified gel and cure time.



HIT-I INSERT



HIT-A ROD

13. Apply torque to anchor. Do not exceed maximum recommended torque.

The minimum number of trigger pulls to fill each screen is as follows:	
S12	1 pump
S16/2	4 pumps
S16	6 pumps
S22/2	4 pumps
S22	6 pumps